

# Painting the Pathfinder C3M4 Combat Drone

By Kenn Strøh Mejer



## Intro:

This guide explains how to paint the Pathfinder Combat Drone by Warlord Games, released by Mantic Games as part of the Pathfinder line for FireFight.

Painting this Combat Drone is done in only few steps, but it does involve a lot of edge highlighting. Edge highlight is a method where the edges of a piece of armor for example, are painted mostly by using the side of the brush or the tip, to make thin lines on the edges, for them to stand out.

The edge highlight technique takes up a lot of the time it takes to paint these models and can be a bit tedious but take it easy and take some breaks in between, otherwise there's a risk that it will be overwhelming.

Always remember, painting is about having fun 😊

## Abbreviations:

### Method:

**AB:** Airbrush

**BR:** Brush

**DB:** Drybrush

**ZE:** Zenithal

### Producer:

**VMC:** Vallejo Model Color

**VMA:** Vallejo Model Air

**VGC:** Vallejo Game Color

**VGCW:** Vallejo Game Color Wash

**AP:** Army Painter

**PRO:** Pro Acryl

**GW:** Games Workshop

**SC:** Scale Color 75

**GSW:** Green Stuff World

**KI:** Kimera Kolors

**AK:** AK Interactive 3. ed

## Contents

<b>Intro:</b> .....	1
<b>Abbreviations:</b> .....	1
Method:.....	1
Producer:.....	1
<b>Preparing the model</b> .....	3
Texture to the base. ....	3
Priming and applying the base color .....	4
<b>Light Grey main color - Airbrush:</b> .....	6
<b>Prepare and Block in the main colors</b> .....	9
<b>Black &amp; Dark Grey</b> .....	10
Black.....	10
Dark Grey.....	10
<b>Light Grey</b> .....	12
<b>Blue OSL glow</b> .....	14
<b>Red</b> .....	16
<b>Brown/Green Weapons</b> .....	18
<b>Base</b> .....	19
<b>Pt. 5 Finish</b> .....	20
<b>Gallery</b> .....	20

## Preparing the model

### Texture to the base.

#### Materials used:

- Green Stuff
- Sand
- PVA Glue
- Water



As there is a couple of steps here, where there is need of some drying time, I tend to do the base in between the painting of the model.

For example, after I do the green stuff step and while it dries, I prime the model (the next step)

Then after I glue the sand, and while that dries, I just continue painting the flyer and so on.

First of all, glue the transparent flyer base to the mdf base, place it in the center of the oval mdf base. When the glue is dry, mix some green stuff and apply it to the base to ease the transition from flyer base to mdf base.

Just apply it around the edge of the flyer base and smooth it out so it makes a nice transition, between the two.

When the green stuff is dry, it is time to sand the base.

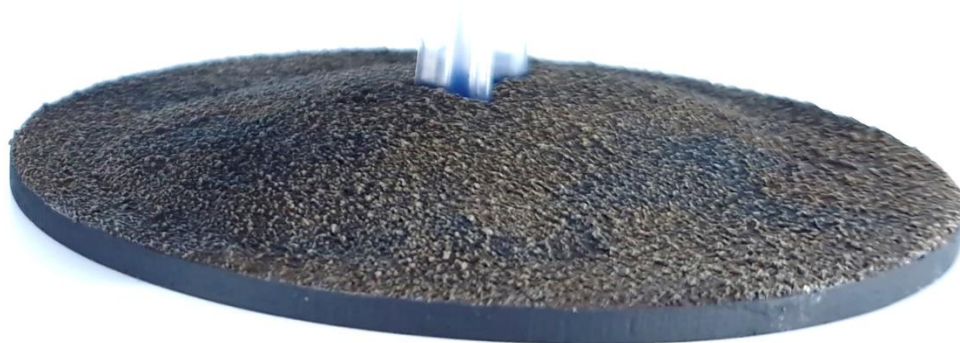
I did the bases by putting PVA / Wood glue on the whole base and pouring a layer of sand over it.

For sand I use Chinchilla Sand, that can be bought at your local pet store and is very cheap, for the amount of bases you can make with it.

The sand is very fine and perfect for bases, but any fine sand is good.

When the glue is dry, hold the base over the trashcan and knock on the bottom to remove the remaining loose sand.

Then I mix the same PVA / Wood glue with water, about 1 part glue and 3-4 parts water and brush the watered-down glue over the sand on the base, to make sure the sand stays in place and is sturdy.



*Picture of the finished base after green stuff, sand, and paint.  
Painting the base is covered at the end of this guide.*

## Priming and applying the base color

### Paints used:

- Black Primer
- VMC 70.992 Neutral Grey

First of all, the whole model needs to be primed black.

Any black primer will do, personally I use Vallejo and AK Interactive primers, but really, you do you 😊

Apply the primer in 2 thin layers, do not overdo the priming as you risk losing details.



Remember to always check the specs on your primer and what the recommended drying time is. Vallejo recommends, that you let their primer dry at least 24 hours before continuing.

Now, I have never had any problems applying paint after 10 hours, but if I have the time, I always let it dry a full 24 hours and paint something else in between.

When the primer is dry, the painting begins.

Start by spraying the whole model with Neutral Grey, this is the base color.

Remember to thin it down with airbrush thinner (3:1) so it can go in the airbrush.



## Light Grey main color - Airbrush:

### Paints used:

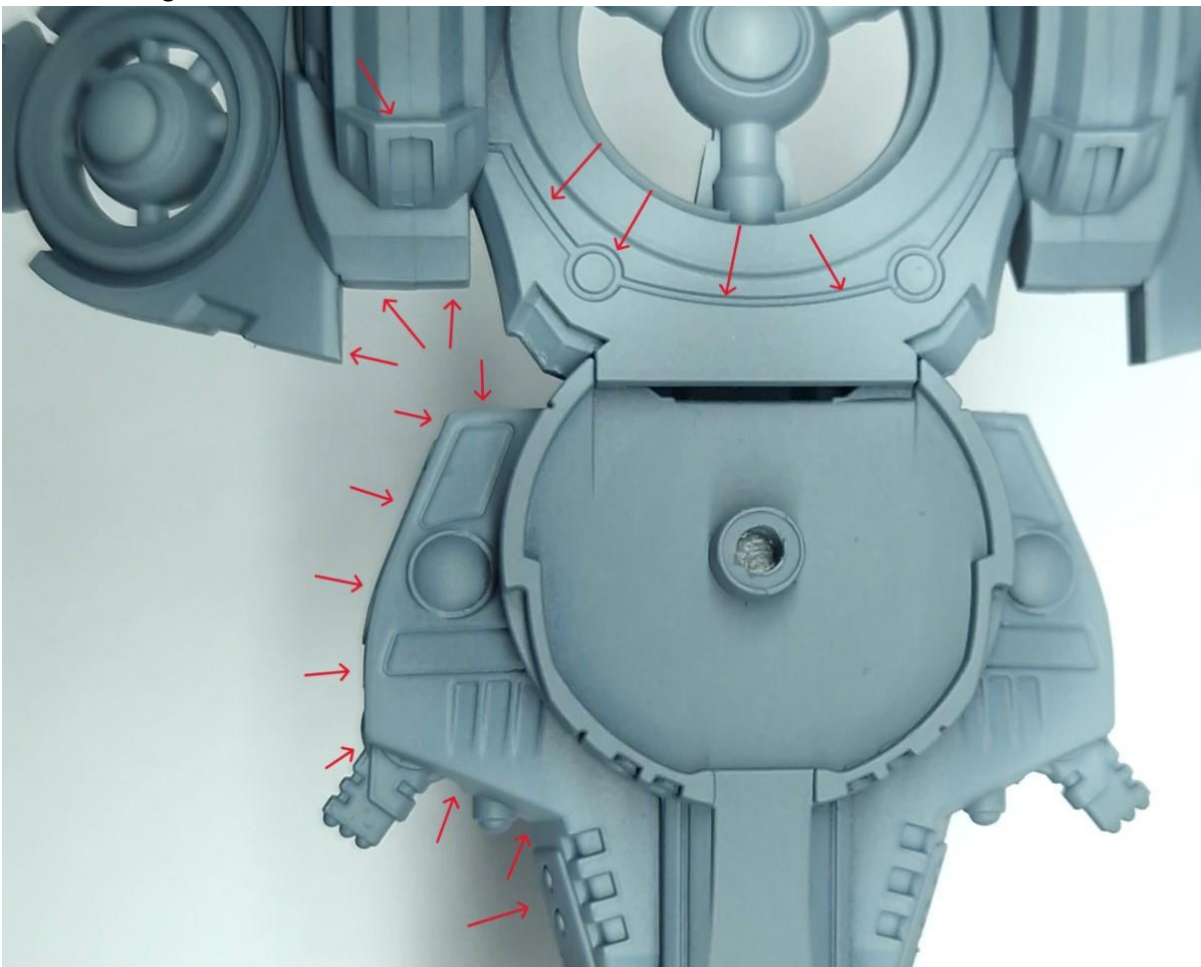
- VMA 71.050 Light Grey
- VGA Dead White



This model is mainly light grey, with complementary colors of grey, black, red & blue, so this step is what really defines the model and sets the lighting for the rest of the paint job.

What you need to think about, is how much of the model you want to be Light Grey, in this step it is better to spray the areas where you are in doubt, cause you can always paint the section again, if you feel like painting it another color in the next step, when we block in the main colors.

Airbrush every single highlight on the model, with Light Grey that you can find, that you want to be the Light Grey main color. Try to hit the edges of the highlights and the middle of flat parts, everywhere you feel like the light will hit.





When you are done airbrushing the first highlight of Light Grey, you will notice that it does not look like much, just trust the process and continue to the next airbrush step.

Load the airbrush with Dead White, I usually thin the paint a bit at this step to apply several thin coats, it just looks better.

Now hit the Combat Drone everywhere you just sprayed Light Grey, but this time with a gentle touch, do not overdo it, take it easy and take your time to do this correctly.





## Prepare and Block in the main colors

### Paints used:

AK11029 Black  
AK11022 Dark Grey  
AK11097 Burnt Red  
AK11022 Dark Grey

The paint job consists of very few colors, in this guide called; Black, Dark Grey, Light Grey, Red and the Blue OSL, that is it.

We have already decided where the Light grey areas should be in the previous step, it is now that we can change our minds and there is nothing wrong, in thinking that a certain area you just highlighted should be one of the other colors, but now is the time we start thinking about how we want the model to look like.

Block in the areas of:

- Black with BR AK Black
- Dark Grey with BR AK Dark Grey
- Red with BR AK Burnt Red

When the areas are all painted with the 3 above colors, finish this step by painting the light Grey areas, in every single crevasse there is, using AK Dark Grey diluted with water, to make it flow easily, be careful and do not hit anything else than the crevasses.



## Black & Dark Grey

### Black

#### Paints used:

VMA 71.054 Dark Grey Blue

VGA 72.748 Sombre Grey

AK11029 Black

AK11022 Dark Grey



It is totally fine to use masking putty and/or masking tape where needed!

The black is a test of your airbrush skills, it requires that you have control of the airbrush and have a great aim. If you do not feel confident with this, then it is absolutely fine doing the next 2 steps by brush, it just requires blending in between! (But hey, why not try it with the airbrush anyway, and do your best, it's the best practice there is. Take it slow and thin your paints, you'll be fine. I promise!)

1. AB VMA 71.054 Dark Grey Blue – highlight where possible. Be careful not to hit anywhere else. If there is a hard-to-reach area, ignore it, this is just for the bigger areas of black!
2. AB VGA 72.748 Sombre Grey – as with the Light Grey, hit the areas you just airbrushed but lighter to emphasize the highlights.
3. BR AK11029 Black diluted with water to flow easily – paint in crevasses of the black areas
4. BR AK11022 Dark Grey – Paint the black areas edge highlight
5. BR VGA 72.748 Sombre Grey - edge highlight

### Dark Grey

#### Paints used:

AK11022 Dark Grey

VMC 70.992 Neutral Grey

The Dark Grey is straight up edge highlight, just as done in the Light Grey and Black, do your thing, you should be used to it by now :D

1. BR mix of AK11022 Dark Grey & VMC 70.992 Neutral Grey 3:1 - Edge highlight
2. BR VMC 70.992 Neutral Grey - Edge highlight





## Light Grey

### Paints used:

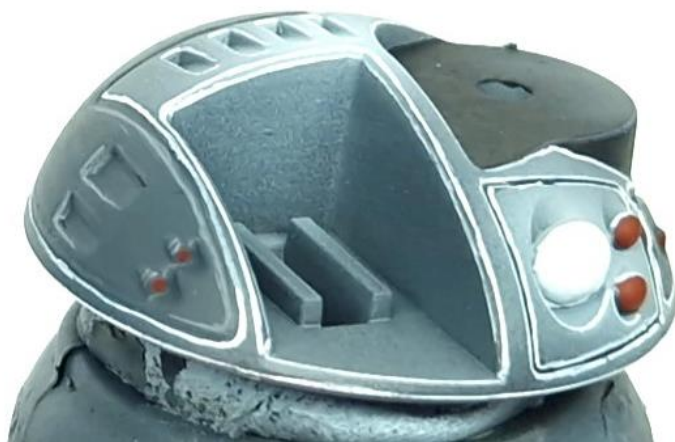
AK11001 White

THIS is where the magic happens!

It is time for even more edge highlight! (I know.... Sorry....)

There is only one step here, it's a big step and a pretty time consuming one as well, BUT it pays off bigtime!  
Take the breaks you need, take it slow, buckle down and lets get it done, you can do it!

1. BR AK11001 White - Edge Highlight all over the Light Grey areas
2. While you have the White paint out, also paint the areas where there the blue OSL glow will be





## Blue OSL glow

### Paints used:

AK11011 White

VGA 72.701 Dead White

AK11175 Sky Blue

So you just painted the areas where you want the glow to be, so lets do this.

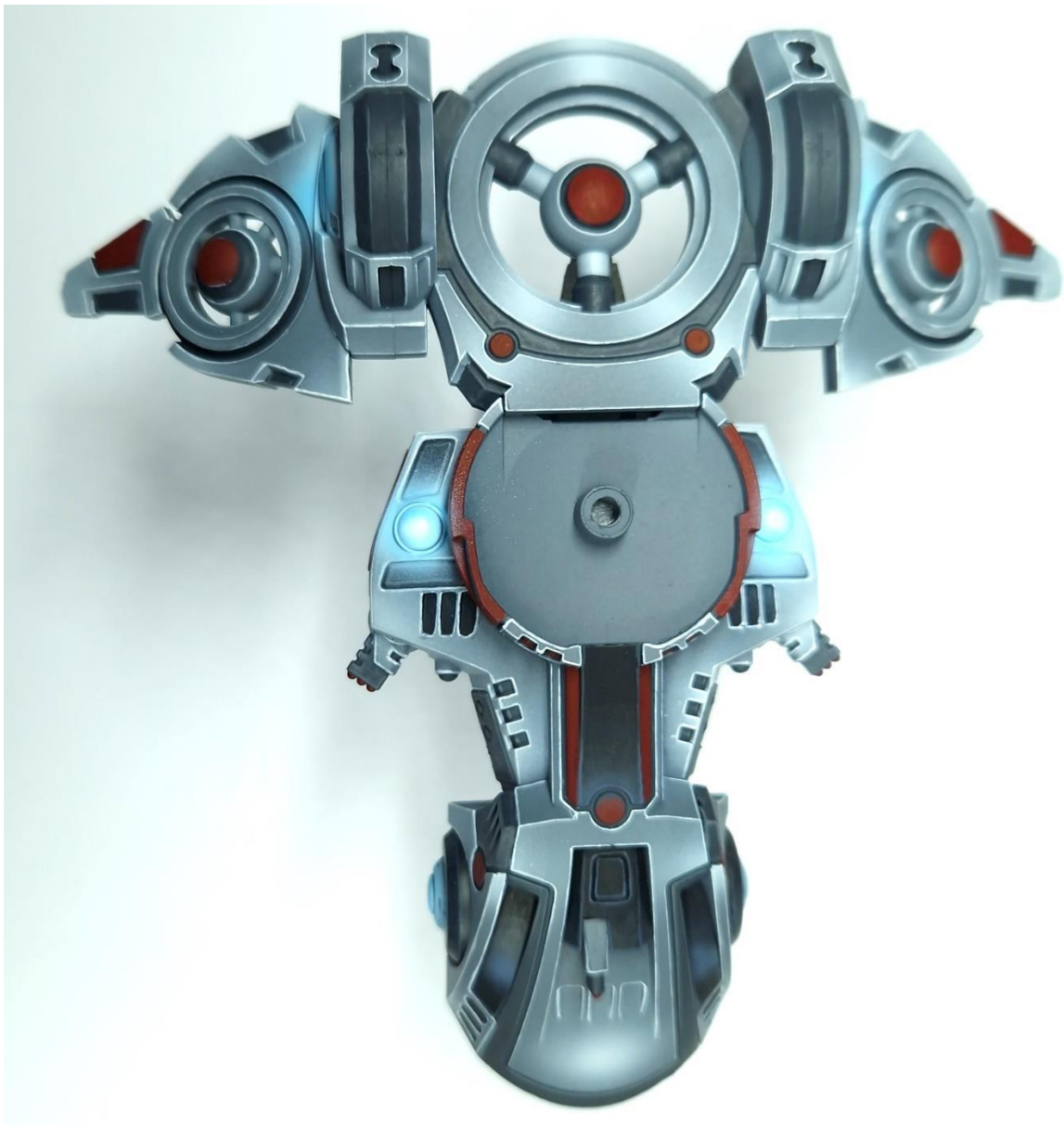
This kind of OSL is easy when you have an airbrush, just follow these few steps:



AB VGA 72.701 Dead White, thinned down 1:1 with airbrush thinner  
Airbrush around the area of the glow, do not overdo it!



AB AK11175 Sky Blue, thinned down 1:4 with airbrush thinner. This must be pretty thin and be careful not to overdo it.  
A few thin layers are best  
Finish off with AB VGA 72.701 Dead White with your absolute precision, airbrush a little white dot in the middle



## Red

### Paints used:

AK11097 Burnt Red

AK11092 Matt Red

AK11087 Scarlet Red

Clean up any overspray and mistakes with BR AK11097 Burnt Red



Edge highlight the reds with BR AK11092 Matt Red



Finish the red with a final edge highlight of BR AK11087 Scarlet Red

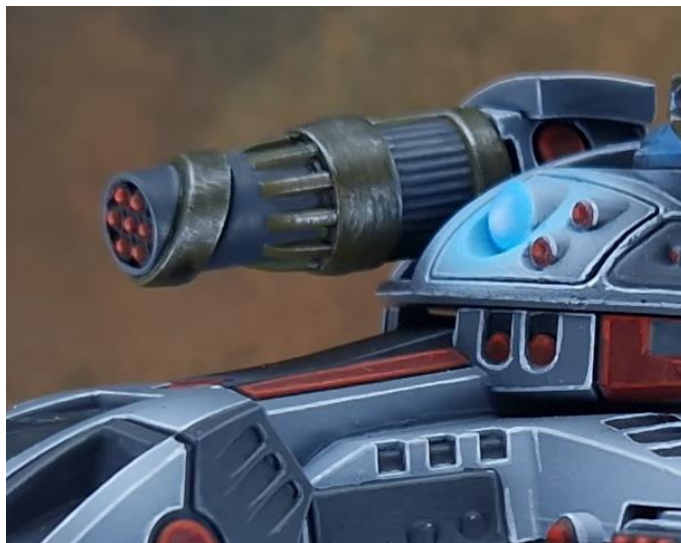


## Brown/Green Weapons

### Paints used:

VMA 71.017 Russian Green  
VMC 70.921 English Uniform  
SC-65 Heavy Metal  
GW Contrast Black Templar

1. BR Paint all the Brown/Green parts with a mix of VMA 71.017 Russian Green / VMC 70.921 English Uniform 3:1
2. DB SC-65 Heavy Metal - as light chipping effect on the Brown/Green
3. BR Give the areas a wash of GW Contrast Black Templar / Airbrush Thinner 1:1 to tone it down



## Base

### Paints used:

VMC 70.872 Chokolade Brown

VMC 70.988 Khaki

VMC 70.884 Stone Grey

AK11029 Black

Now that the base is all prepared and full of sand, the last thing to do is to paint the base.

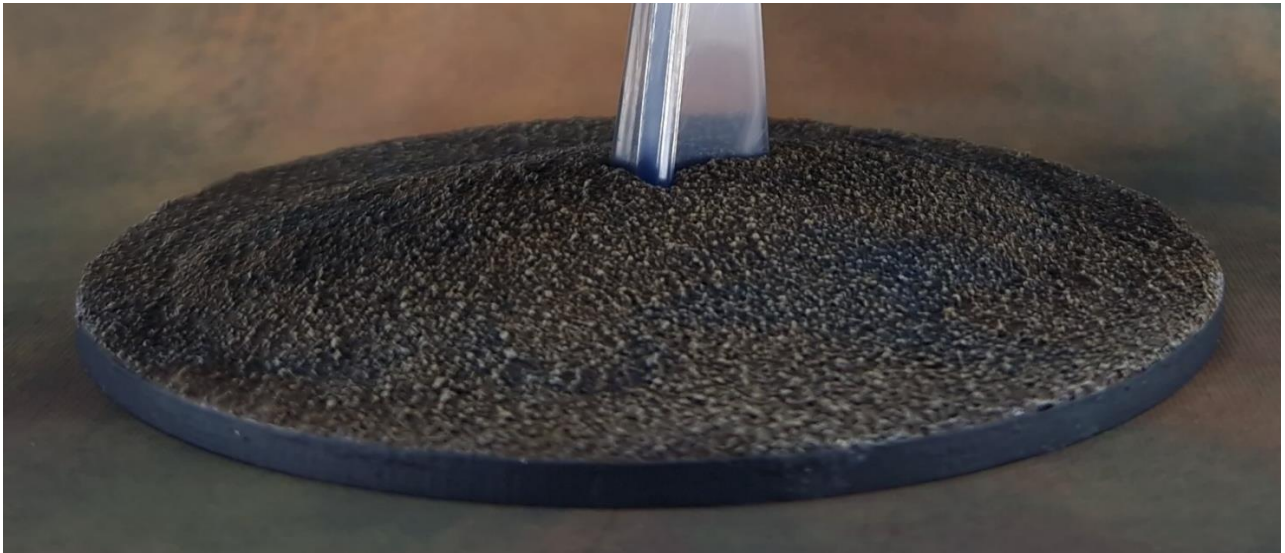
This is the recipe I use for all FireFight and DeadZone I paint for Mantic, easy, and fast:

1. BR Chokolade Brown as the base color (badum-tshhh!)
2. DB Khaki (Heavy Drybrush)
3. DB Stone Grey (Light Drybrush)
4. BR Black along the base sides

This is the standard bases for FireFight & DeadZone.

That said, sometimes I like to bend the rules and with the Enforcers I wanted the bases to be a bit grittier, so there's a few extra steps to them, that I usually do:

5. BR VGCW Sephia - All over the base
6. While the Sephia is still wet, splash in pool(s) of BR VGCW Black to wetblend here and there
7. Let dry and DB VMC 70.884 Stone Grey (Light Drybrush)



## Pt. 5 Finish.

Finish the models by giving it all a varnish.

If you use the models a lot and want maximum protection, I recommend you first apply a gloss varnish by airbrush, followed by 2 layers of matte varnish. Be sure to let the layers dry completely in between.

That will give them the best protection from usage.

Remember to have fun while painting 😊

- Kenn

If you like this guide, have a look at my social pages for more information.

<https://thenerdcafe.dk/>

<https://www.facebook.com/mejersnerdcave>

<https://www.instagram.com/mejers.nerdcave/>

## Gallery

This recipe can be applied to all of the Enforcer vehicles, even the infantry as well.







